

INTRODUCING INICIO

ALUMINUM AND STEEL WINDOWS AND DOORS



INICIO.
WINDOWS + DOORS

Glenview
HAUS.

INICIO Aluminum

KEY FEATURES

HIGH PERFORMANCE

Our products utilize Low E2 or Low E3 glass, reducing U-factors for greater energy efficiency.

ENERGY EFFICIENCY

Our aluminum and steel windows and doors feature thermally broken profiles for superior insulation and structural strength.

AESTHETIC APPEAL

Clean, modern lines maximize views and integrate seamlessly into contemporary designs.

CUSTOMIZATION

Our designs allow for a wide range of configurations to suit modern architectural projects.

SUSTAINABILITY

Over 65% of the aluminum used in our products is recycled, reducing carbon footprints, while the galvanized steel provides long-term durability.

Johnsen Schmalig's emphasis on modern, sustainable, and minimalist architecture aligns with INICIO's sleek and customizable designs as well as our commitment to eco-conscious projects.



Our Finish Process

1

The process begins with degreasing, etching, chromium pretreatment (AAMA 2605), rinsing with demineralized water, and oven drying.

2

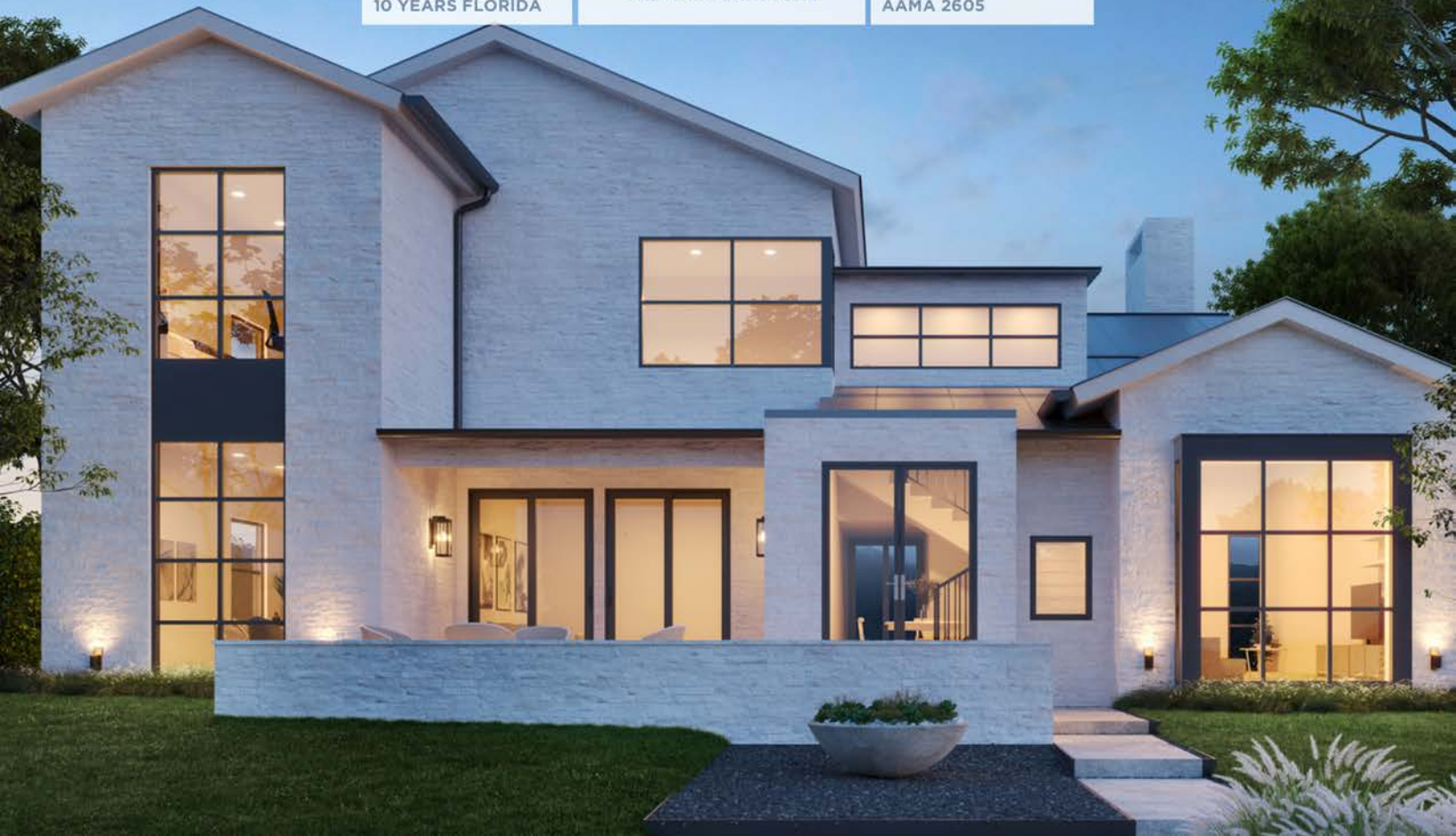
Electrostatic varnishing: charged powder particles are sprayed onto a grounded profile.

3

Paint polymerization in a varnish oven forms polymers. INICIO Aluminum uses an AAMA 2605 Fluoropolymer coating.

QUALICOAT CLASSES

CLASS 1 1 YEAR FLORIDA	WEATHER EXPOSURE	STANDARD AAMA 2603
CLASS 2 3 YEARS FLORIDA	WEATHER EXPOSURE	STANDARD AAMA 2604
CLASS 3 10 YEARS FLORIDA	WEATHER EXPOSURE	STANDARD AAMA 2605



Our Finish Options

BLACK

RAL 9005

BLACK TEXTURED

RAL 9005

SILVER

RAL 9006

BRONZE

RAL 8019

WHITE

RAL 9016

GUN METAL

RAL 7043



Glass Options

INICIO Aluminum windows and doors will utilize 2 primary performance glass offerings:

1. Low E2
2. Low E3

We are incorporating the same performance glass as our INICIO Steel line made by Saint-Gobain.

CURRENT NFRC VALUES

DG UNIT	
U FACTOR	.28
SHGC	.22
VLT	.52

CASEMENT	
U FACTOR	.35
SHGC	.18
VLT	.39

INICIO Aluminum Windows and Doors are offered in the following specialty glazings:

- Satinato
- Seedy Baroque
- Laminated Clear
- Laminated Matte White Interlayer
- Arena C
- Chinchilla
- Delta Matte
- Cathedral
- Waterfall



Swing Doors

FEATURES

- 1 & 2 PANEL UNITS, INSWING AND OUTSWING.
- UNEQUAL PANEL WIDTHS AVAILABLE

HARDWARE

- NARROW DESIGN FOR UNOBSTRUCTED VIEW

GLASS OPTIONS

- LOW E2 AND LOW E3
- AVAILABLE IN PRIVACY & DECORATIVE

JAMB	2-3/4"
TOP FRAME TO GLASS	6"
BOTTOM OF SILL TO GLASS	5"
EDGE OF JAMB TO GLASS	6"
SILL HEIGHT	1-9/16" OR 5/8"

MULTIPOINT LOCKING BY SIEGENIA



Crank Out Casements

FEATURES

- CRANK OUT
- SLEEK AND MODERN PROFILE
- NUMEROUS SIZES AND CONFIGURATIONS AVAILABLE

HARDWARE

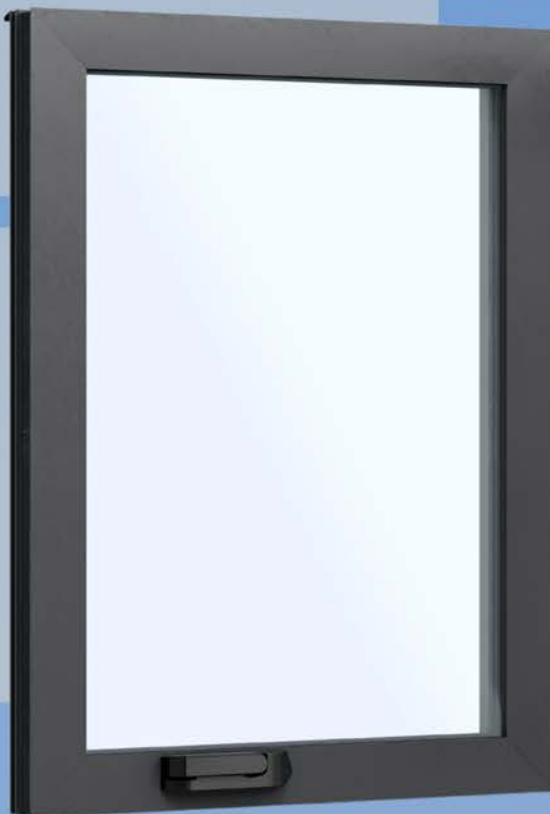
- CONCEALED MULTIPOINT LOCK
- ONE LOCKING LEVER

GLASS OPTIONS

- LOW E2 AND LOW E3
- AVAILABLE IN PRIVACY & DECORATIVE

INICIO CRANK OUT CASEMENTS ARE BUILT WITH A 2-3/4" FRAME.

- JAMB SIZE IS 3-1/8"
- EDGE OF FRAME TO GLASS IS 3-3/8"
- SCREEN MESH IS "BETTER VIEW" FOR GREATER TRANSPARENCY



Fixed Direct Glaze Units

FEATURES

LARGE EXPANSES OF GLASS FOR MAXIMUM VIEWS WITH NUMEROUS CONFIGURATIONS AND SIZES AVAILABLE.

GLASS OPTIONS

- LOW E2 AND LOW E3
- AVAILABLE IN PRIVACY & DECORATIVE

INICIO DIRECT GLAZE WINDOWS HAVE AN OVERALL JAMB SIZE OF 2-3/4"

- EDGE OF FRAME TO GLASS IS 2-11/32"
- RECTANGULAR AND 3 OR 4 SIDED GEOMETRIC SHAPES ARE AVAILABLE.



Lift and Slide Doors

FEATURES

LARGE EXPANSES OF GLASS ARE AVAILABLE IN NUMEROUS CONFIGURATIONS AND SIZES TO PROVIDED MAXIMUM VIEWS.

HARDWARE

FLUSH HANDLES & MULTIPOINT LOCK

GLASS OPTIONS

- LOW E2 AND LOW E3
- AVAILABLE IN PRIVACY & DECORATIVE
- SILL HEIGHT IS 1-7/8"
- NO FLOOR RECESS REQUIRED
- 2,3,4,5 PANEL SYSTEMS AVAILABLE



LEAD TIME

STANDARD INICIO ALUMINUM WINDOWS AND DOORS HAVE A **12-14 WEEK** LEAD TIME.

CUSTOM ITEMS HAVE LEAD TIMES THAT WILL BE COMMUNICATED AT TIME OF ORDER.

LEAD TIMES COMMENCE AT TIME OF ORDER UPON VERIFICATION OF DEALER CREDIT.

WARRANTY

10

YEARS

**FINISH
WARRANTY**

5

YEARS

**HARDWARE
WARRANTY**

10

YEARS

**GLASS
WARRANTY**



INICIO Steel

CONSTRUCTION

Steel profiles are made by Ottostumm -- an Italian and Swiss company that manufactures steel and bronze profiles. Our standard is a galvanized steel profile with a zinc primer and a powder coating.

COLD ROLLED

Steel billets are heated and cooled slowly at room temperature, allowing structural integrity and unmatched precision.

SOLID CRAFTSMANSHIP

One square foot of our Steel units is 15-16 lbs., a testament to the solid craftsmanship and timeless appeal that only steel can offer.

DURABLE PROFILES

Our steel profiles are thermally broken using a polyamide insulator reinforced with glass fibers.



Steel Powder Coating

1

The spray gun generates a negative charge into the powder.

2

The negatively charged powder is then attracted to the positive charged Steel part.


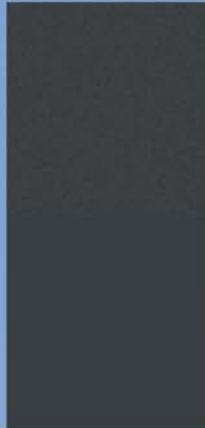
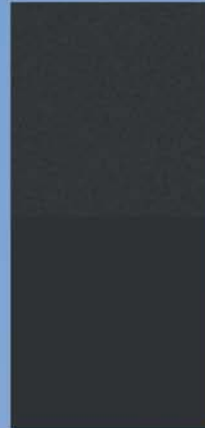




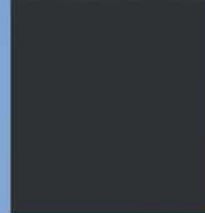


3

Once the powder covers the Steel, it is sent to an oven to cure the powders and further bond the finish to the steel in a consistent layer or coating.

4

Powder coating is applied primarily to the galvanized steel substrate,

Steel Finishes

	SIGNAL BLACK	ANTHRACITE GRAY	BLACK GRAY	JET BLACK	SIGNAL WHITE
TEXTURED					
SMOOTH					
	RAL 9004	RAL 7016	RAL 7021	RAL 9005	RAL 9003

We offer **5 different finishes** on our standard galvanized steel windows and doors. They follow the RAL color chart. There are 3 different variations of black, bronze, and white.

Custom colors are also available.

Finishes also can be **textured or smooth**.

Steel Glazing Options

GLAZING OPTIONS

- Low E2
- Low E3
- We are incorporating the same performance glass as our INICIO Aluminum line made by Saint Gobain

CURRENT NFRC VALUES

DIRECT GLAZE

U FACTOR	.30
SHGC	.23
VLT	.53

CASEMENT

U FACTOR	.36
SHGC	.20
VLT	.43

GLAZING FINISHES

- Satin Etch (Satinato)
- Laminated (Matte White Interlayer)
- Seedy Baroque
- Laminated Clear
- Standard Obscure
- Chinchilla (Wave Glass)
- Delta
- Waterfall
- Cathedral



Steel Product Offerings



Hinge Doors

INSWING & OUTSWING

SINGLE & DOUBLE PANEL SYSTEMS

ARCHTOP DOORS AVAILABLE IN
SINGLE & DOUBLE CONFIGURATIONS

TRANSOMS & SIDELIGHTS AVAILABLE

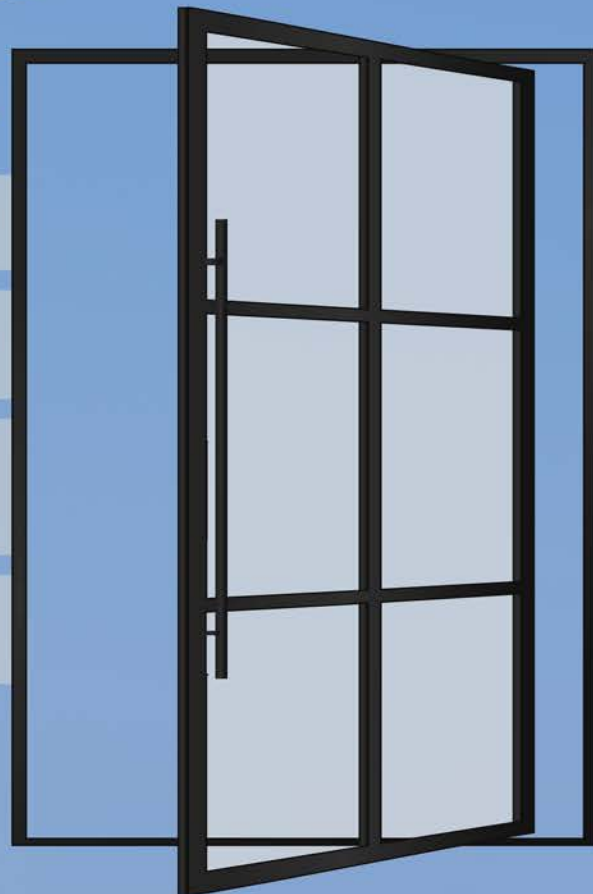
Pivot Doors

INSWING & OUTSWING

SINGLE & DOUBLE PANEL SYSTEMS

PIVOT HARDWARE BY
FRITS-JURGENS

TRANSOMS & SIDELIGHTS AVAILABLE



Lift and Slide Doors



Bi-Fold Doors



Direct Glazed Windows



Hopper Windows

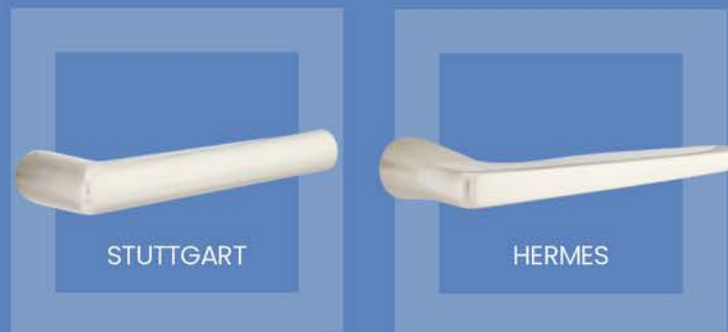
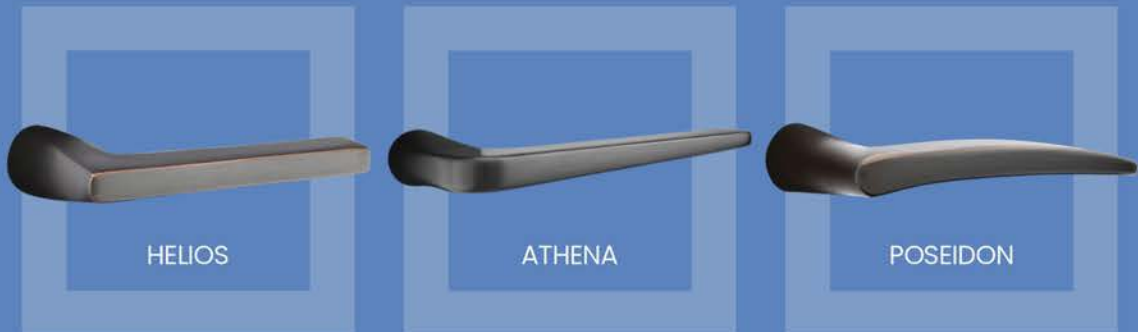
Pivot
Windows



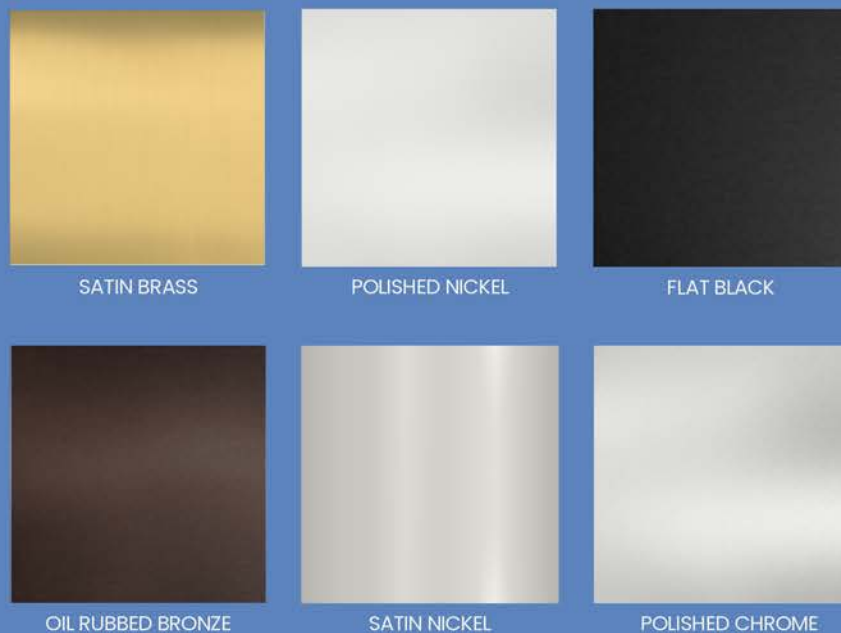
Tilt-Turn
Windows



Steel Door Hardware Options



Steel Door Hardware Finishes



Steel Window Hardware Options



ARCHED CLASSIC

SCROLL CLASSIC

STRAIGHT CLASSIC

CURVED CLASSIC

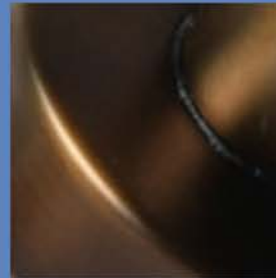
Steel Window Hardware Finishes



SATIN CHROME



ANTIQUÉ BLACK



DARK BRONZE



GUN METAL



OIL RUBBED BRONZE



ANTIQUÉ BRASS



Featured Projects



994



























